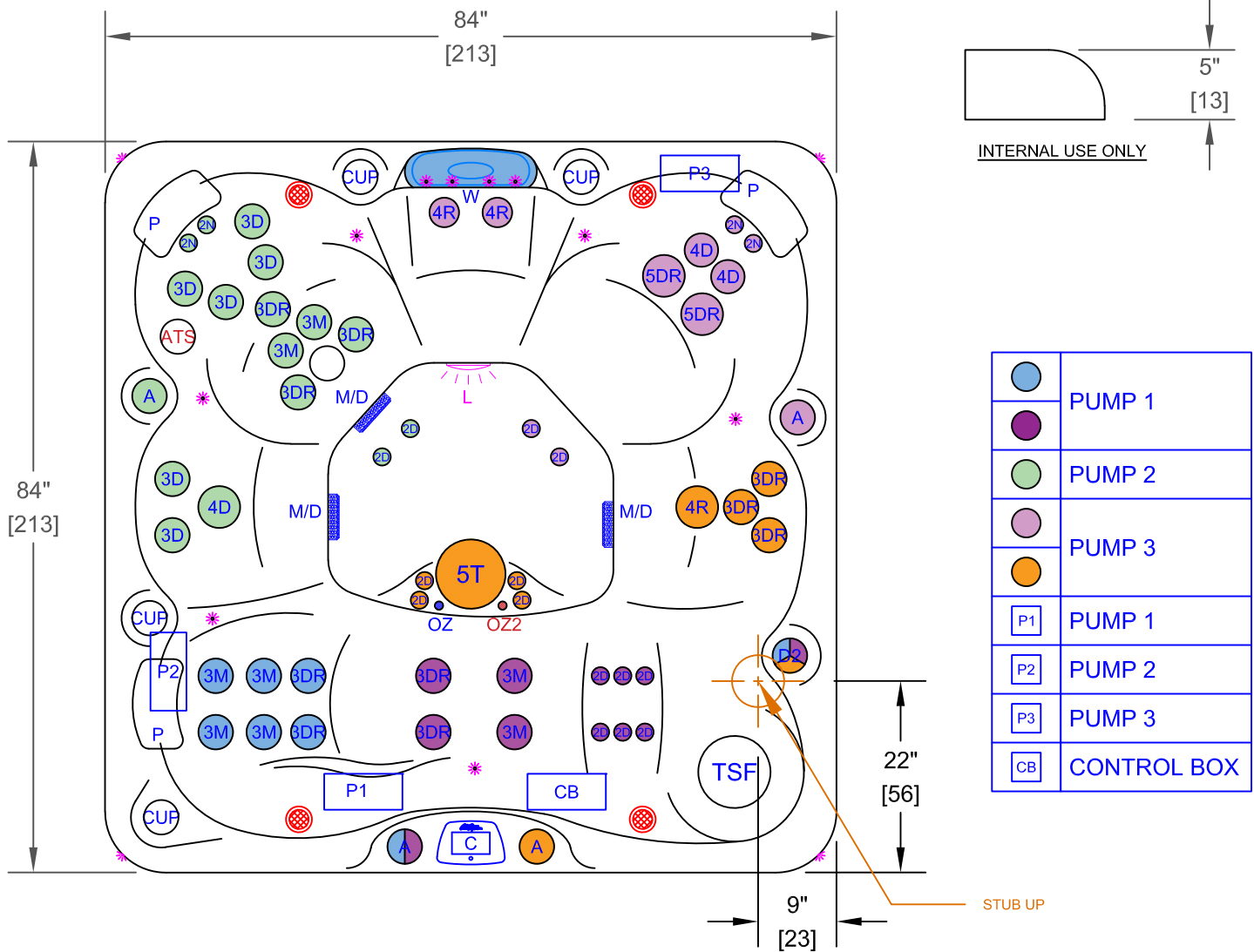


NOTES:
 1. DUE TO OUR CONTINUOUS IMPROVEMENT PROGRAM, ALL MODELS AND SPECIFICATIONS ARE SUBJECT TO CHANGE WITHOUT NOTICE.



EC-751LX - LEGEND			
SYMB.	DESCRIPTION	PART NUMBER	QTY.
2N	200 VELOCITY NECK 100%	PLU29920-612-400	4
2D	200 VELOCITY DIRECTIONAL	PLU29920-012-400	14
3D	300 VELOCITY DIRECTIONAL	PLU29930-112-400	6
3M	300 VELOCITY MASSAGE	PLU29930-142-400	8
3DR	300 VELOCITY DOUBLE ROTO	PLU29930-191-400	10
4D	400 VELOCITY DIRECTIONAL	PLU29940-112-400	3
4R	400 VELOCITY ROTO	PLU29940-122-400	3
5DR	500 VELOCITY DOUBLE ROTO	PLU29950-032-400	2
5T	500 VELOCITY DOME JET WITH VALVE (1JET)	PLU29950-501-400	1
D2	VELOCITY 2" WATER DIVERTER VALVE	PLU25058-202-800	2
A	VELOCITY AIR CONTROL VALVE	PLU25059-202-400	4
W	LED WATERFALL		1
TSF	50 SQ. FT. TELEWEIR FILTER		1
M/D	MAIN DRAIN		2
P	Y-PILLOWS		3
C	CAL SPAS TOUCH 2		1
OZ	PURE SILK OZONATOR WITH MAZZIE INJECTOR AND MIXING CHAMBER		1
L	BEAM-LITE 4X CABINET CORNER LED LIGHTING		1
*	MULTI COLORED LED LIGHT		1
*	PERIMETER LED LIGHTING		1

OPTIONS		
SYMB.	DESCRIPTION	OPTION NUMBER
ATS	EXCLUSIVE ADJUSTABLE THERAPY SYSTEM PLUS (ATS PLUS)	OPT22-109
OZ2	TWIN PURE SILK SYSTEM DIAL OZONATORS WITH MAZZIE INJECTORS AND MIXING CHAMBERS	OPT22-102DX-1
247	24/7 FILTRATION SYSTEM	OPT22-112C
FS43	FREEDOM SOUND SYSTEM BLUETOOTH, POWERED SUBWOOFER AND 4X SPEAKERS	OPT22-FS43
-	THERMO-GUARD FULL FOAM	OPT22-900
SS	CAL SPAS SALT SYSTEM	OPT22-113S

SPECIFICATIONS		TITLE	JET LAYOUT - STD	
DIMENSION (in)	84"x84"x40-1/2"	LINE	ESCAPE X-SERIES	
DIMENSION (cm)	213x213x100	MODEL	2022 SPA LINE PACIFICA	
DRY WEIGHT	800 LBS [363 Kg]	NUM	EC-751LX	
FILLED WEIGHT	4340 LBS [1969 Kg]	DWG NO.	CS000401	REV A
WATER CAP.	425 GAL [1609 L]	SCALE	NTS	SHEET 1 OF 1